



# Ashchurch Rural

# Parish Council Newsletter

DECEMBER 2022

## In this issue...

- ARPC Development Updates
- NDP Update
- Community Speedwatch
- ABoR Update
- Community Events
- Community Updates

## A warm welcome...

to the December edition of the Ashchurch Rural Parish Council newsletter. Here you will find lots of useful information about all that is going on in the parish and how to get involved.

We wish you a very Merry Christmas and a Happy New Year.



## Ashchurch Rural Parish Council Neighbourhood Development Plan - what it really means...



We are pleased to confirm that on 28th July 2022 a referendum for Ashchurch Neighbourhood Development Plan (NDP) secured a majority vote required for Tewkesbury Borough Council to use the plan to help it decide planning applications in the parish. The NDP then went on to Full Council and was formally 'made' (adopted as policy) on the 27th September 2022. This means that the NDP must be taken into account by developers and planners alike when considering future projects. It applies to both planning applications and designs of permitted development and must address key issues such as impact on traffic, the rural aesthetic of the area and the needs of the community.

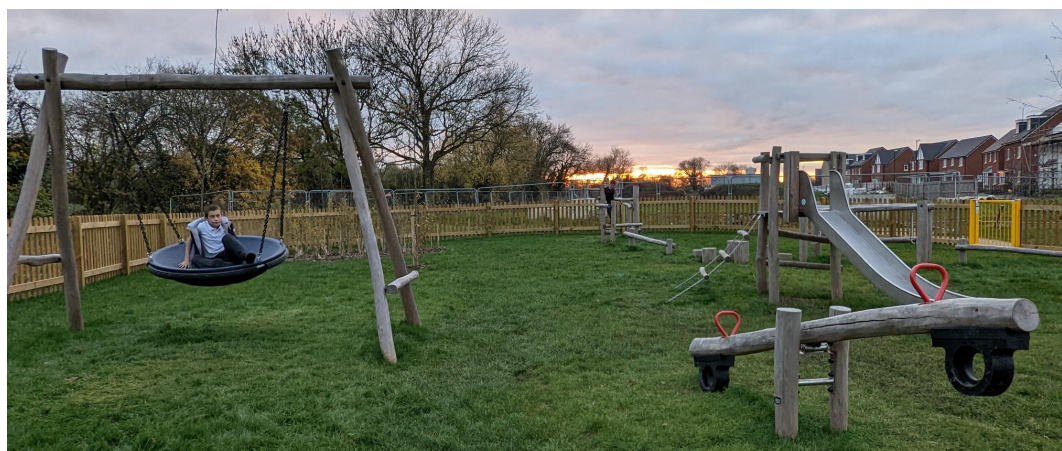
The Tewkesbury Garden Town (TGT) programme will have a major impact on our parish, given Ashchurch is at the centre of its plans. The TGT team are currently developing a design manual for developers to follow which will outline guidelines that need to be followed by planners and developers. The TGT assure us these guidelines will be formed from the input and feedback of both borough and local councils, as well as the local community and businesses. We are working with the TGT team to ensure we protect our parish hamlets and remain a rural parish.



Although we plan to use the NDP to aid this process, the scale of the TGT, its imminent impact on our community and its recent changes (MOD site no longer available for development) means we feel we need to enter our NDP into an immediate review. This means that we can focus our NDP further to deal with core issues important to the community and ensure the NDP continues to reflect the changing context of the TGT and remains effective. Our planning consultant has advised us of the cost and an expected time scale of approximately two years. To do this we plan to create an NDP working group which will consist of both councillors and members of the public/community and will be project managed by our planning consultant. Therefore we would like to encourage residents to participate in the establishment of a working group and plan to give a small presentation on what this will entail at our Community Catch Up event in March. However, if you would like to be involved in this working group please do not hesitate to contact us.

## Let the parish play

We are delighted that the first playground in our parish is now open! The small people of the parish can now swing, slide and play until their heart is content at the new park off Ashton Crescent in the Barleyfields development. One (of three planned) natural play areas / open spaces for older children is also now open! So wrap up warm, put on your wellies and explore! You might even spot some cows and sheep in the nearby fields!!



## Councillor Profile Cllr Angela Brown

"I have been a Parish Councillor for nearly 30 years and joined the large combined Ashchurch Parish Council encompassing Northway, in the 1990's. I served for three years as Chairman and helped many changes take place including successfully fighting for traffic lights at Aston Cross to increase road safety. In 2008, Ashchurch Rural Parish Council was formed to represent the more rural aspects of the area and as Chairman and also representing Aston on Carrant, we covered issues in the villages such as planning, flooding and replacement drains which has helped our hamlets considerably. I have also represented the council in laying a Remembrance Sunday wreath at the War Memorial for many years on and recently attended the opening of the new Dobbies Garden Centre marking the start of another new chapter for Ashchurch Rural Parish Council and its residents."



# Development Updates

With such a lot of development currently under way in the Parish, it's sometimes hard to keep up. However, did you know all information can be found on the Tewkesbury Borough Council Planning portal? We have included the planning application numbers to help you! Here is small round up of all current developments and upcoming developments;

## Dobbies & The Cotswold Designer Outlet by Hitchins:

Dobbies Garden Centre has now opened and is proving popular. Montel Engineering are currently working on phase two of the project including the spine road. Initial Planning Application No: 17/00520/OUT

## 850 Homes at Fiddington - part of the Dobbies/Cotswold Designer Outlet build

Montel's Engineering are currently working on phase one of the project including the spine road. Building of houses due to commence 2023. This area is split into further areas of housing:

Initial Planning Application No:17/00520/OUT

Planning Application No: 21/01551/APP (118 Homes)

Planning Application No: 22/00439/APP (215 Homes)

## 460 Homes - Land To The North West Of Fiddington

Planning Application No: 21/00451/OUT

## Barleyfields at Pamington by Linden Homes:

Phase two due to be completed in 2023.

Planning Application No: 14/00972/OUT

## Ashchurch - Land At Fitzhamon Park

Consent granted for the erection of up to 90 houses, a care home and community land.

Planning Application No: 18/00043/OUT

## Ashchurch Fields by New Dawn Homes:

These houses are currently under construction and are due to be completed in 2023

Planning Application No: 14/00343/OUT

## Redevelopment of MOD Ashchurch

Including demolition, refurbishment and erection of new buildings. Initial works have now started.

Planning Application No: 21/00516/FUL

# STAY IN THE LOOP..

## THERE ARE LOTS OF WAYS TO FIND OUT WHATS GOING ON IN OUR PARISH



### WELCOME TUESDAYS

Pop in to the Village Hall for a chat - Tuesdays between 11am - 1pm



### FACEBOOK

Search for us: 'Ashchurch Rural PC'

### OUR ARPC WEBSITE

[www.ashchurchruralpc.org.uk](http://www.ashchurchruralpc.org.uk)

### ARPC MEETINGS

All residents are invited to attend our parish meetings!

### LOCAL NOTICEBOARDS

Most villages have a local noticeboard where we share lots of great info!

**Welcome TUESDAYS**  
**Ashchurch Village Hall**  
**11am - 1pm**  
**POP IN FOR A CHAT ABOUT LOCAL ISSUES THAT ARE IMPORTANT TO YOU!**

# Make your point...

Do you have a question or a concern you would like to speak to the parish council about? Ashchurch Rural Parish Council are aware not everything should be done online and you cannot underestimate the important of a face to face conversation. We also love to connect with our rural and growing community and keep up to date with the things that matter to you. We are therefore holding weekly drop in surgeries – where everyone is welcome. So, whether you want to start up a community initiative and need help, raise a concern or find out more about what we do, pop along for a chat!

## Did you know?

The general public are invited and welcomed to our Parish Council Meetings. Here you are able to raise any issues you would like the council to consider or simply just listen in!

**LOCAL TRADES!**  
**WE NEED YOU!**  
**HELP US TO HELP EVERYONE!!**  
**WE ARE ALWAYS LOOKING TO IMPROVE OUR PARISH AND NEED HONEST & RELIABLE LOCAL TRADES/ BUSINESSES TO QUOTE!**  
**SEND US YOUR DETAILS!!**  
**SO WE HAVE A LIST OF GO TO TRADES FOR ALL THE PARISH NEEDS!**  
**YOU MIGHT EVEN GET YOURSELF IN THE NEXT NEWSLETTER!**  
**EMAIL:**  
**CLERK@ASHCHURCHRURALPC.ORG.UK**  
**OR MESSAGE US ON FACEBOOK**  
**ASHCHURCH RURAL PC**

**DID YOU KNOW..**  
**ASHCHURCH RURAL PARISH COUNCIL RUN A**  
**TRAVEL VOUCHER SCHEME**  
**DO YOU OR SOMEONE YOU KNOW?**  

- Live in Ashchurch Rural Parish?
- Have very limited / no access to a motor vehicle and are reliant upon public transport, taxi's or lifts?
- And Suffer a lack of personal mobility due to disability and / or old age

**IF YOU ANSWERED YES ... YOU COULD BE ELIGIBLE FOR FREE TRANSPORT VOUCHERS**  
**FIND OUT MORE INFORMATION ON OUR WEBSITE:**  
**WWW.ASHCHURCHRURALPC.ORG.UK**  
**OR CALL US ON 07305 022766**

# St Nicholas' Graveyard

St Nicholas' graveyard in Ashchurch is the only local graveyard in our parish and a place of rest to many from our community. However, it is now beginning to near capacity, with approximately only 50 spaces left. The possibility of expanding the current graveyard site has been explored however due to the water table on site and the rules surrounding graveyards, there is currently no option to expand the graveyard.

## Community



## Update



# Community Speedwatch

Ashchurch Rural Parish Council are excited to be working with Gloucestershire Constabulary and Gloucestershire Highways to instigate a Community Speedwatch in the parish. Our parish is quite unique in that we have both a major trunk road (A46) running through it as well as numerous small country lanes. We also have housing estates and now outlet roads posing their own issues.

Each hamlet faces its own road dangers and we feel it is important to reduce these as best we can. So whether you have concerns about speed through your village lanes, dangerous parking on your road or the high stakes gamble of crossing the A46 at Barleyfields, we need to come together to make it safer for families, children and those who simply drive through our wonderful parish.

Community Speedwatch is about the community working together to influence drivers and remind everyone to show respect on the roads. It is achieved using a variety of tools, strategies and initiatives. We are therefore looking to local community groups and residents to volunteer their time to help achieve this and make our parish a safer place to live. This could be anything from displaying a speed sticker on your wheely bin to being part of a team of speed gun operators. If this could be you or you would simply like to find out more information, please get in touch! Together, we can make a difference.

## For the ducks sake...



We are lucky to have a resident family of ducks in Fiddington who also use our roads! They take a short walk down Fiddington Lane every day to get to the pond! They need our community speedwatch -lets do it for them!



# M5 Junction 9 & A46 Transport Scheme



The M5 Junction 9 and A46 (Ashchurch) Transport Scheme is a proposal to develop a new or reconfigured M5 junction near Tewkesbury and re-route the existing A46 around Ashchurch to Teddington Hands roundabout. A wide variety of route options are currently being considered. Gloucestershire County Council (GCC) was planning to undertake a non-statutory public consultation this autumn. However, external advice highlighted that further work should be undertaken before going out to public consultation. This additional work will be carried out to further review and shortlist scheme options and will be supported by National Highways'. The public consultation will now take place once the additional analysis has been completed, which could take 9 months with public consultation due in late 2023 at the earliest. Find out more on the Gloucestershire Highways website.

# Update: The bridge to nowhere..

In the last edition we highlighted the concern we have both with the planning permission process of the Ashchurch Bridge Over Rail (ABoR) but also the affects it could have on local communities, traffic and flooding. With support of Bredon and Northway Parish Councils, we applied for Judicial Review into the planning process which to our surprise was rejected at High Court.

Our legal team have now reviewed this judgement and the decision was taken to submit for permission to appeal the decision.

This submission has now been approved by the Appeals Court and the case is due to be heard on 13th December 2022.



# Are you Carer Aware?

Gloucestershire Carers Hub are commissioned by Gloucestershire Council along with the NHS to provide a free of charge service to support informal, unpaid Carers across Gloucestershire (People looking after a loved one/family member/friend or neighbour). As part of our service we offer Advice, Information, Guidance and Support. There are 6.5 million carers in the UK and more than 63,000 in Gloucestershire. With 1 in 10 people having caring responsibilities, it's likely that everyone knows someone who is an informal, unpaid carer, but may not be aware of it.

If you are a carer, you can join the Carers Hub by calling

**0300 111 9000**

If you are a business or employer and would like to find out more about the free Carer Aware Training or our toolkit for employers email us [careraware@peopleplus.co.uk](mailto:careraware@peopleplus.co.uk) or call **0300 111 9000**

For more information visit our website at

<https://gloucestershirecarershub.co.uk/>

# Ring in the changes and saving lives...



The old telephone box in Fiddington Lane may no longer call home but it could soon save a life!

We are currently in the process of transforming this into a funky defibrillator storage box which will hold a state of the art, fully automatic defibrillator.

Keep your eyes peeled for the big red telephone box getting a much need spruce up and it's precious new equipment very soon!

**Community Update**

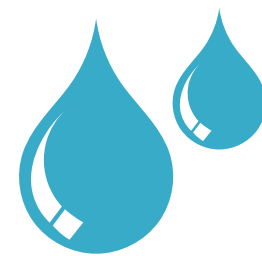


# Help put us in the picture

As part of our ongoing aim to alleviate flooding in our parish we are working with Network Rail to assess the railway culvert in Natton. Local residents in this area have experience awful and worsening flooding along this lane over the past 20 years and it is thought there may have been a reduction in the size of the culvert under the railway bridge in the early 2000's which has caused this. Network Rail have no records pre 2006 and will not take responsibility without proof! Therefore we are searching to locate any photos of the double culvert there previously. We are sadly not having much luck and therefore ask if anyone has any old photos of this area - please get in touch!



# Are you a riparian owner?



Ashchurch Rural Parish Council are committed to reducing the risk of flooding and maintaining the condition of our roads. Therefore we have written to some of our residents requesting they assess their property and ditches. However, we may have missed you....

The owner of land or property that adjoins a watercourse, such as a roadside ditch, is known as the riparian owner. Although the Highways authority is responsible for the highway, they do not own the sub-soil and as such the owner of the land / property adjoining the road is normally the sole riparian owner. Riparian owner responsibilities include that of clearing these ditches of debris and carrying out necessary maintenance of the watercourse through or adjoining your property.

This includes maintaining the banks and bed of the watercourse, including any piped sections, to avoid any obstruction to the flow of water.

With the winter months now upon us, we are asking all riparian owners to take time to assess their ditches and if applicable, clear these of debris before the rain really comes!

Further information can be found on Gloucestershire County Council website under Waterside Living



# Pamington Lane Junction

Pamington Lane is a beautiful lane used by local residents, dog walkers and cyclists alike. However, it is also an increasingly busy road junction with cars, cyclists, tractors and site lorries using it. Ashchurch rural parish council are working closely with the manager of the Barleyfields site manager to ensure the area is kept as safe as possible during this busy time. We have received some complaints regarding mud of the road which we are happy to confirm Barleyfields site team are clearing on a daily basis. This is done every afternoon / evening to keep on top of this. However, with the ongoing building works it is inevitable that the roads will get mud and debris on them during the day and therefore we ask users to remain vigilant and reduce speed accordingly. Many thanks!

# Local Events

## Pass Wide and Slow Ride

The Pass Wide and Slow Ride event was held in Fiddington in September to raise public awareness of vulnerable road users such as horse riders, cyclists, runners and walkers. This national event is particularly relevant in Fiddington owing to the recent increase in traffic using these lanes to avoid main route congestion and the higher than average amount of equestrian activity we have in Fiddington and Natton.

The event was arranged by Community Pathways Group who are encouraging developers and councils to take vulnerable road users into account when designing new schemes. They are requesting the equine community and bridleways to be considered when designing path and cycle ways in future developments.

The event was attended by 9 horse riders, 3 cyclists and 10 walkers including local MP Laurence Robertson, County Councillor Vernon Smith, Borough Councillor Mel Gore and two of our Parish Councillors, David Garnett and Tony Davies.



# REMEMBER: PASS WIDE & SLOW

- Leave 2 metres between you where possible
- Pass slowly - 10mph max
- Be patient - even the most dependable horse can be unpredictable
- Be ready to STOP if needed



# Community Catch Up Event

Saturday 11th March 2023

Ashchurch Village Hall

- NDP Review Info
- Update of development
- Community Speedwatch
- Guest speakers
- Tea & cake
- And much much more

Details to follow



# ROSES CHOIR CHRISTMAS CONCERT

The Roses Theatre Choir, in association with St. Nicholas Church, warmly invites you to an uplifting evening of Christmas music.

St. Nicholas Church  
Ashchurch  
GL20 8JZ

Sunday 11th December  
6:00pm

Doors open 5:45pm

Entry: Donations

Proceeds will be shared between the church and local charity GRASAC: Gloucestershire Rape and Sexual Abuse Centre.

