



Ashchurch Rural

Parish Council Newsletter

APRIL 2024

You are invited to
Ashchurch Rural Parish Council

Community Action Event

DROP IN:

Saturday 27 April 2024

1.00pm - 3.30pm

Ashchurch Village Hall

Parish Planning Update

Who, What, Where and When!

Drop in to see us and speak to the developers themselves!



Dear Resident,

As you will be aware, our parish is becoming a magnet for many developers and we have lots of planning applications in various stages of the planning process! Pop along to find out the latest and what we are doing to positively influence the applications and protect our existing communities. Give us your feedback and ask the developers and Tewkesbury Borough Council Garden Communities team any burning questions you may have! We look forward to welcoming you for a cup of tea and a piece of cake!

because together we can make a difference...





Community Speedwatch is

GO GO GO



Ashchurch Rural Parish Council are delighted to confirm we now have the ARPC Community Speedwatch (CSW) group set up and with the support of Gloucestershire Constabulary, we have undertaken several speed watches.

CSW Groups are legislated by the Police, who only allow for surveys in specific locations. Our approved locations include:

- Fiddington Lane
- A46 at Ashchurch (near school)
- A46 at Barleyfields
- A46 Aston Cross
- B4079 Aston Cross

However, if you feel there are other areas which could benefit from a CSW session, please do let us know.



How Community Speedwatch works:

If a vehicle is exceeding the speed limit by more than 6 miles per hour, details are recorded. The Police then send letters to the worst offenders and those drivers with three offences will be visited by the Police. The surveys can also influence where the Police site their mobile speed camera's.

How Community Speedwatch helps:

The campaign appears to effectively lower speeds during each session, with the groups presence resulting in many drivers slowing down to pass. However, the Police believe that this presence also goes on to heighten driver awareness the next time they drive along that particular road and reduces speeds on these later occurrences too.

The key to this remaining an affective deterrent to speeding is to repeat the speedwatch sporadically so that drivers are somewhat expecting to see us and slow down as a result.

The Future:

Since the initial equipment was loaned from Gloucestershire Constabulary on a short term basis, ARPC have decided to invest in their own equipment (and supporting road signage) to enable the project to continue. ARPC have been lucky to have been given support from Gloucestershire County Councils Build Back Better Fund and would like to thank County Councillor Vernon Smith for helping us apply for this funding.

Could you help?

In line with purchasing new equipment, the CSW team are looking to expand this Spring /Summer, in terms of both number of sessions being held and numbers of volunteers. As the saying goes, 'Many hands make light work' and if you could give just one hour, it would make such a difference. Please do reach out to use if you think you could help!

Ringling in the changes ..saving lives



The old telephone box in Fiddington Lane may no longer call home but it can now save a life! We are proud to confirm that we have transformed this previously shabby telephone box into a fabulous home for our latest parish defibrillator.

The state of the art, fully automatic defibrillator is now in situ if you ever need it!

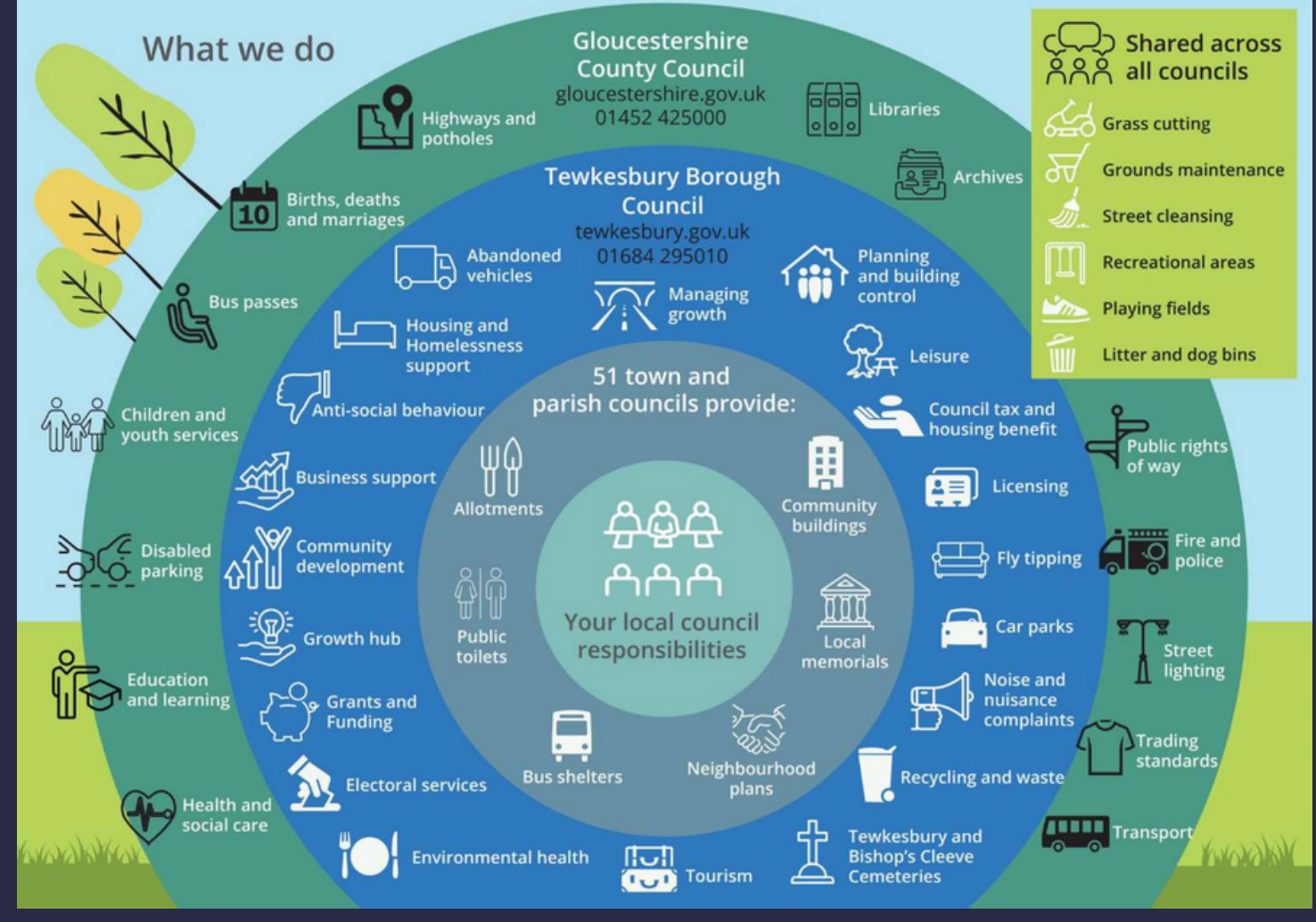
THANK YOU



ARPC would like to say a massive thank you to Natton resident, Neal Minchew, for providing his excellent refurbishment skills free of charge and to Crown Paints of Kingsditch Retail Park in Cheltenham for sponsoring and providing the paint!

Council Roles...

With a County Council, a Borough Council and a Parish Council, it is sometimes hard to know who deals with what when it comes to local government! This wheel aims to help you with that and is a great first port of call when you have an issue you would like to raise and don't know who to call.



Ashchurch Rural Parish Council are always happy to help and can be contacted via email on:

clerk@ashchurchruralpc.org.uk

Dog Walker News!

With a huge rise in dog owners and dog walking over the past few years, ARPC are happy to support owners in a quick and painless clear up by providing dog waste bins across the parish. This year we have added a new bin in Pamington Lane and upgraded the old bin.

We have also ordered bins for the following locations:

- Fiddington Lane corner with Walton Cardiff Lane
- The pedestrianised lane on Loverose Way
- A46 at St Nicolas's Church

All sites were identified and requested by local residents, so if you know of any other dog fouling hotspots or a path that could do with a bin, please do let us know.



Village Gateway Project

ARPC are starting a programme of renewing village and hamlet entry signs across the parish and replacing old and damaged metal signage with wooden gateways similar to the one below.

A key reason for installing these gates is the positive impact they have on traffic speed. These gates are supported by Gloucestershire Highways as having a traffic calming affect by making drivers aware they are entering a populated area.

With many new developments planned for the parish, ARPC also feel this project could be used to help preserve the identity of existing hamlets. This falls in line with the NDP Review policy regarding protecting and buffering our existing communities. By clearly demarcating our hamlets, we hope to reduce any further potential issues when the County and Borough Councils preside over naming new housing developments.


We also hope this project can iron out existing issues such as delivery drivers being unsure where in Pamington Barleyfields addresses are located by including a double sided sign with 'Pamington Village' and 'Pamington Barleyfields' to help identify the two communities.



Development Updates

With such a lot of development currently under way in the Parish, it's sometimes hard to keep up. However, did you know all information can be found on the Tewkesbury Borough Council Planning portal? We have included the planning application numbers to help you! Here is small round up of all current developments and upcoming developments;


 **Dobbies & The Cotswold Designer Outlet by Hitchins:**
Dobbies Garden Centre has now opened and is proving popular. The outlet is currently being built and due for completion Spring 2025


 **850 Homes at Fiddington**
Initial Planning Application No:17/00520/OUT
The spine road is nearing completion and housing is currently being built. This area is split into further areas of housing:

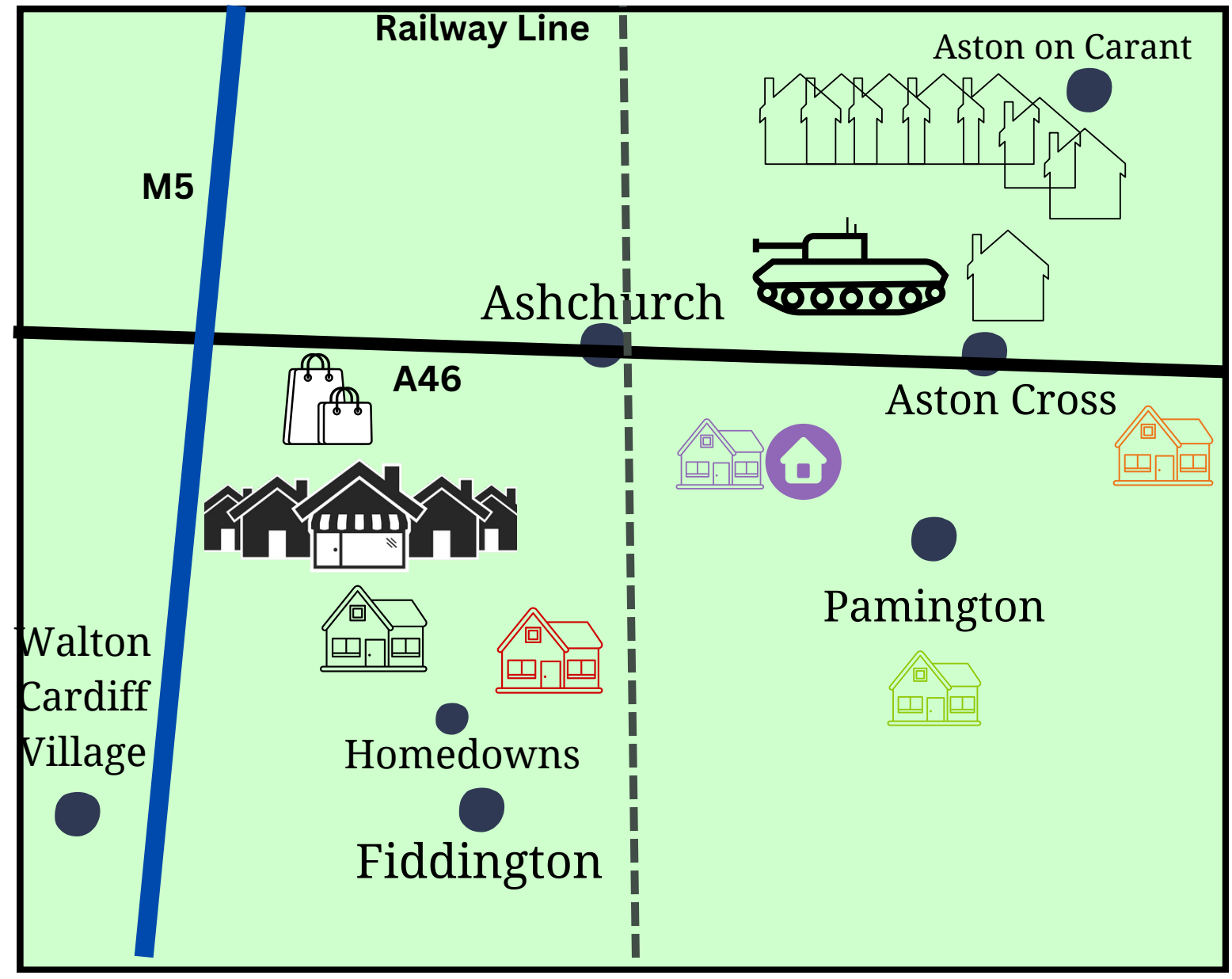
 **460 Homes - Land To The North West Of Fiddington**
Planning Application No: 21/00451/OUT

 **120 Homes - Homedowns:** Planning Application: No: 22/01320/OUT
This application went to appeal and has now been granted permission.

 **90 Homes Ashchurch - Land At Fitzhamon Park**
Planning Application No: 18/00043/OUT
Although consent has been granted for the erection of up to 90 houses, a care home and community land, there has been no further plans put forward.

 **175 Homes - South of Pamington:**
Planning Application No: 23/01170/OUT
ARPC have been consulting with developer to ensure residents concerns are addressed. Awaiting planning decision..

 **10 Homes - Aston Cross**
Planning Application No: 23/00661/FUL
This application went to appeal and has now been granted permission.



 **The following sites are in Pre-Planning and we expect official planning applications soon:**

The eastern plot of the MOD Ashchurch:
St Modwens are currently running Community Engagement activities regarding potential planning for 350 homes on this site.
Visit: bit.ly/ashchurch-mod
Contact: western-feedback@meeting-place.uk or Call: 0800 148 8911

Fields North of MOD site and south of Aston on Carrant
This land is owned by North Ashchurch Consortium whom are represented by Marrons. They are currently running Community Engagement activities regarding planning for housing and local infrastructure.
Visit: www.northashchurch.com
Contact: contact@northashchurch.com

NDP Review

The ARPC Neighbourhood Development Plan (NDP) Review is now underway. After an initial NDP Review meeting was held in June for Councillors and members of the public, a public launch presentation was held in November to which we welcomed some 60 plus parish residents.

The event included presentations by planning consultant Andrea Pellegram and Laura Chester from the Gloucestershire Wildlife Trust, and were very well received. A show of hands indicated unanimous support for proposed review policies. These are:

- **A Local nature recovery strategy**
- **Implementing green buffers around existing villages and hamlets**

The NDP will reinforce protection from uncontrolled development for the parish in the future and should be completed within the next 12 months or so. As such ARPC expect this policy to be usable before the Strategic Local Plan.

All information can be found on our website however ARPC would also like to extend an invite to the next NDP event to all parish residents - details below.

NDP Review Drop In Event:

Venue: Ashchurch Village Hall
When: Drop in anytime between 5pm - 8pm
Date: Wednesday 22 May 2024



Cheltenham Borough Council, Gloucester City Council and Tewkesbury Borough Council are now producing a Strategic and Local Plan (SLP). This is the replacement for the Joint Core Strategy (JCS) which is now out of date. The SLP will provide an overarching planning strategy and cross-boundary strategic policies covering the whole area and local policies for each local authority. ARPC are happy to confirm we have submitted official responses during the consultation

Garden Town renamed...

In the months since the publication of the gateway review (July 2023), the new council at Tewkesbury Borough Council have been grappling with the recommendations and reviewing and revising process, consultation and communication amongst other things.

There have been numerous public engagement events which have culminated in the signing of the new Garden Communities Charter. A positive outcome of the public consultation on the garden communities programme is that several consultation groups have been established. These cover Landowners and Developers, Parish Councils and Community Groups. ARPC are well represented on the parish council group which is great given up to 90% of the garden communities could be within the parish. Members from each of the consultation groups have also been appointed to an Oversight Board which will scrutinise the wider development of the programme.

A benefit of engaging with the consultation groups is that information on forthcoming plans from developers is available at an early stage, in some cases before pre-planning and some of the presentations have been very interesting with regard to how the local area is likely to change over the next 10 years or so.



Community Engagement

Please do provide your feedback to the relevant parties, whether that be a developer or Tewkesbury Borough Council! However, if it's not too much trouble - could you copy us in too? We keep an ongoing log of planning and other feedback and it helps shape the ARPC response we make on behalf parish residents! *Thank You*



clerk@ashchurchruralpc.org.uk

Sensational CIL and s106

What is CIL?

CIL stands for Community Infrastructure Levy and is a charge that local authorities make on new developments to help deliver the infrastructure needed to support the development. The charge managed by Tewkesbury Borough Council (TBC) but a 25% Neighbourhood portion is passed back to Ashchurch Rural Parish Council to spend. (Note: parishes with no NDP only receive 15%)

What can CIL be spent on?

Whilst TBC can spend their proportion of CIL to fund a wide range of infrastructures such as transport improvements, flood defences, schools, doctors and hospitals.

The neighbourhood portion of the levy can be spent on a different elements provided that they meet the requirement to 'support the development of the area'. Some examples of parish CIL spending are:

- Environmental Improvements such as landscaping, improving open spaces or cycle / footpaths to better link communities
- New benches or signage
- Equipment for a community group
- Improvements to a community building



What is s106?

s106 is a legal obligation placed on developers to provide contributions towards the costs of providing community / social infrastructure, the need for which has arisen as a **result of a new development being built**.

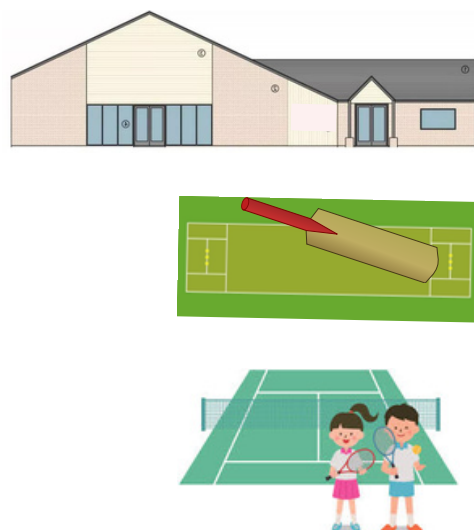
For example, the obligation to:

- Provide an agreed percentage of affordable housing
- Pay contributions towards off-site playing fields and sports facilities
- Pay contributions towards education
- Pay contributions to other community facilities such as libraries

It is important to note that s106 obligations form part of the planning process and as such should mitigate all issues creating the new development may cause.

s106 Coming Soon:

ARPC are happy to confirm a community centre and sports pitches are being built as part of the Fiddington Fields s106 and this will be transferred to ARPC to own and manage. ARPC are collaborating regarding the design and the type of pitches installed. However, we need to know what the community wants and needs?



Calculating Precept:



The precept is the element of council tax that funds the parish council and the services it provides. The charge to the council tax payer is calculated using the tax base for the parish i.e. the the number of households within it (after adjustments). Due to variations in budget requirements and the number of houses in the parish, this figure will fluctuate from year to year. This is quite a complicated subject, however Tewkesbury Borough Council has an explanation on their website: tewkesbury.gov.uk/services/council-tax-benefits-and-business-rates/council-tax/parish-precept/



The A46 Solution

The M5 Junction 9 and A46 (Ashchurch) Transport Scheme is a proposal to develop a new or reconfigured M5 junction near Tewkesbury and re-route the existing A46 around Ashchurch to Teddington Hands roundabout. The Spring 2024 update states: Gloucestershire County Council (GCC) has been considering undertaking a non-statutory public consultation for the M5 Junction 9 and A46 (Ashchurch) Transport Scheme. We have been reviewing the shortlist of scheme options and undertaken additional analysis to inform decision making. This work is ongoing. A non-statutory public consultation is now unlikely to take place until after a general election, which is expected later this year.

Find out more on the Gloucestershire Highways website.

The Future:

With new development, ARPC will receive significant CIL contributions. We want to make sure this is spent on relevant, useful and needed improvements that will benefit the community. This could be on a new development or in an existing community and could be anything that makes the parish a nicer place to live! However, ARPC are only a small team and without feedback from those in the community we can't guess the wants and needs of residents. So, if you have any ideas, please let us know!

It might be:

- A service you are currently struggling to access
- A club you'd love to see available locally e.g. a lunch club for the elderly
- A type of equipment at the Community Centre or Village Hall e.g. an outdoor gym or all weather table tennis table
- A pathway connecting all of the parish hamlets for better connectivity and dog walks

We promise to consider it all!



DID YOU KNOW..

ASHCHURCH RURAL PARISH COUNCIL RUN A

TRAVEL VOUCHER SCHEME

DO YOU OR SOMEONE YOU KNOW?

- Live in Ashchurch Rural Parish?
- Have very limited / no access to a motor vehicle and are reliant upon public transport, taxi's or lifts?
- And Suffer a lack of personal mobility due to disability and / or old age

IF YOU ANSWERED YES ... YOU COULD BE ELIGIBLE FOR FREE TRANSPORT VOUCHERS

FIND OUT MORE INFORMATION ON OUR WEBSITE: WWW.ASHCHURCHRURALPC.ORG.UK OR CALL US ON 07305 022766

Stay up to date...

ARPC have been incredibly lucky to have had an amazing Duke of Edinburgh volunteer helping us to set up our very own ARPC Facebook group. This has really grown now and we welcome any local residents to join We post lots of information about planning, what's going on locally and is a great place to find out information!

Please use the QR code here or search 'Ashchurch Rural PC'



Alternatively, our website also has lots of great information on it:

www.ashchurchruralpc.org.uk

We would also like to take this opportunity to say a massive Congratulations to our volunteer, Aimee, who has now completed her Duke of Edinburgh and moves on to concentrate on her university studies.

Thank You

STAY IN THE LOOP..
THERE ARE LOTS OF WAYS TO FIND OUT WHATS GOING ON IN OUR PARISH

WELCOME TUESDAYS
Pop in to the Village Hall for a chat - Tuesdays between 11am - 1pm

FACEBOOK
Search for us: 'Ashchurch Rural PC'

OUR ARPC WEBSITE
www.ashchurchruralpc.org.uk

ARPC MEETINGS
All residents are invited to attend our parish meetings!

LOCAL NOTICEBOARDS
Most villages have a local noticeboard where we share lots of great info!

