



Gloucestershire
Wildlife Trust

Neighbourhood Development Plan service

- GWT, in collaboration with Gloucestershire Centre for Ecological Records (GCER) and Wild Service (our ecological consultancy) offer an NDP support service to parish councils.
- This involves interrogating environmental and species data for the parish, producing maps (ie for designated sites and protected species- see slides) and highlighting their importance and identifying where any protected species surveys may be required.
- *We also offer a more detailed service where we can help with:*
 - running a community consultation on the natural environment to investigate what is most important to the community;
 - identifying key wildlife sites and corridors;
 - working with the parish council to co-write environmental policies into the NDP which align with the local plan and national planning policies, ensuring they are robust and future proof;
 - working with the community to develop a list of important green spaces and local wildlife projects;
 - identifying potential biodiversity net gain sites; and
 - getting the policy Building with Nature accredited. This is a very well-regarded green infrastructure standard that will demonstrate the NDP is of top quality when it comes to considering green (and blue) infrastructure, to help hold it in high-regard with the local council and developers.

What are the benefits of working with us?

- GCER hold the most accurate, up to date environmental and ecological data in the county.
- We are experts in interrogating existing wildlife and habitats, understanding their importance and in identifying the potential for high-quality future habitats in line with the nature recovery plan for the county (therefore aligning with local and national policies).
- We can produce all the maps you need for your NDP, to demonstrate existing species and habitats which require protection.
- We can help ensure your NDP is as robust as possible from an environmental and ecological perspective.
- We can help you to work with the community to put together a plan going forward, showing which green spaces you would like to protect and enhance. This will be taken into account in future planning and can support future developer contributions.

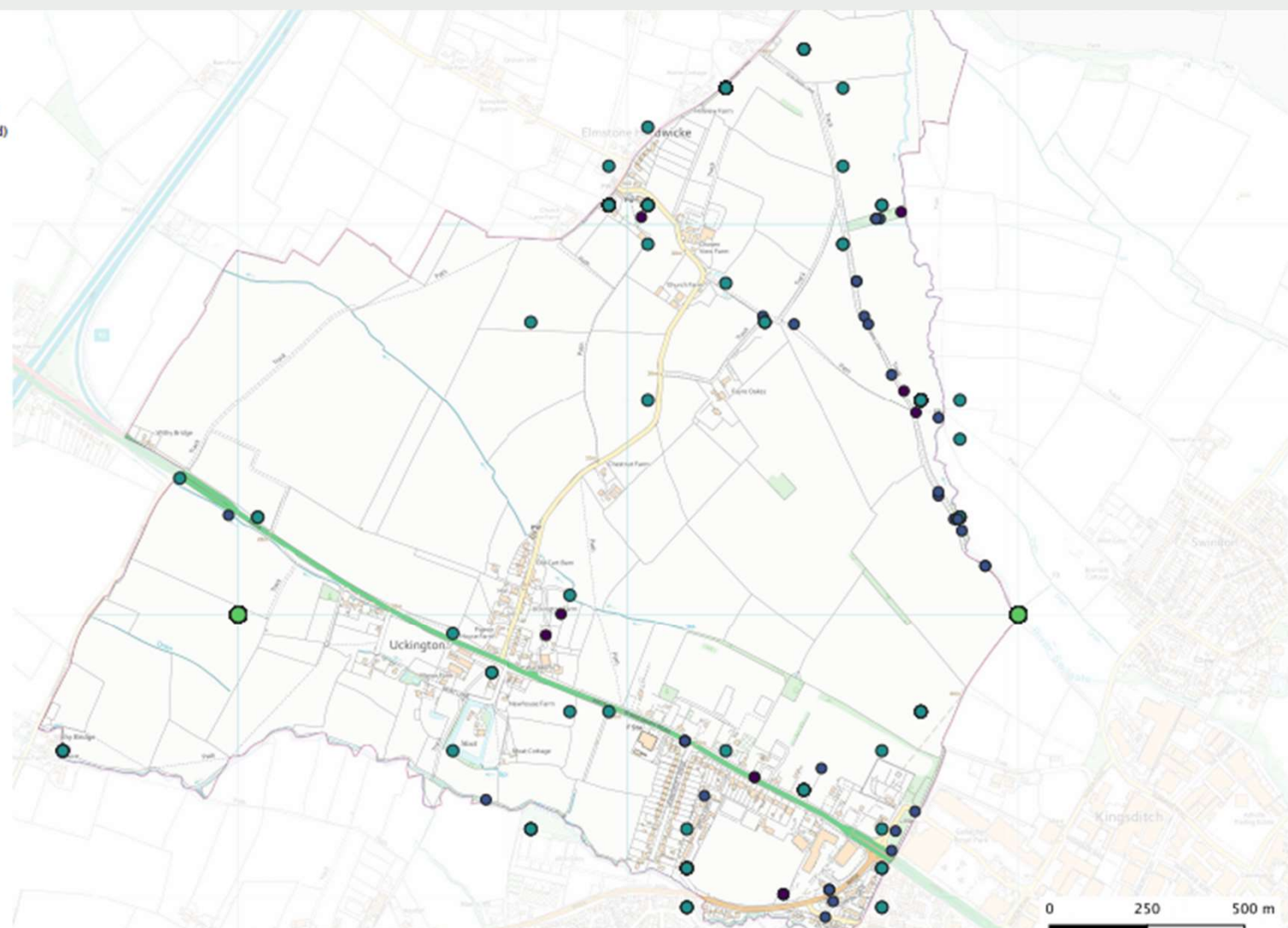
Species record locations

- High precision: 1m grid square
- High precision: 10m grid square
- Standard precision: 100m grid square
- Low precision: 2km grid square (tetrad)
- Parish boundary










About the wildlife sightings locations:
Each dot represents the centre of a grid reference square where one or more notable species has been recorded. Some locations may have lots of records; others only a single sighting. The map indicates both the visibility of wildlife species around the parish, and also the distribution of recording effort.

Larger, paler dots represent the less-distinct species records, e.g. 2km square Bird Atlas records. Smaller, darker dots are for precise 1m, 10m or 100m records.

Please refer to the associated spreadsheet for details. Note that absence of records doesn't mean the species isn't in your parish! GCER has over 2 million records of plants and animals in its database, but these may be patchy in areas with low recording effort or limited access.



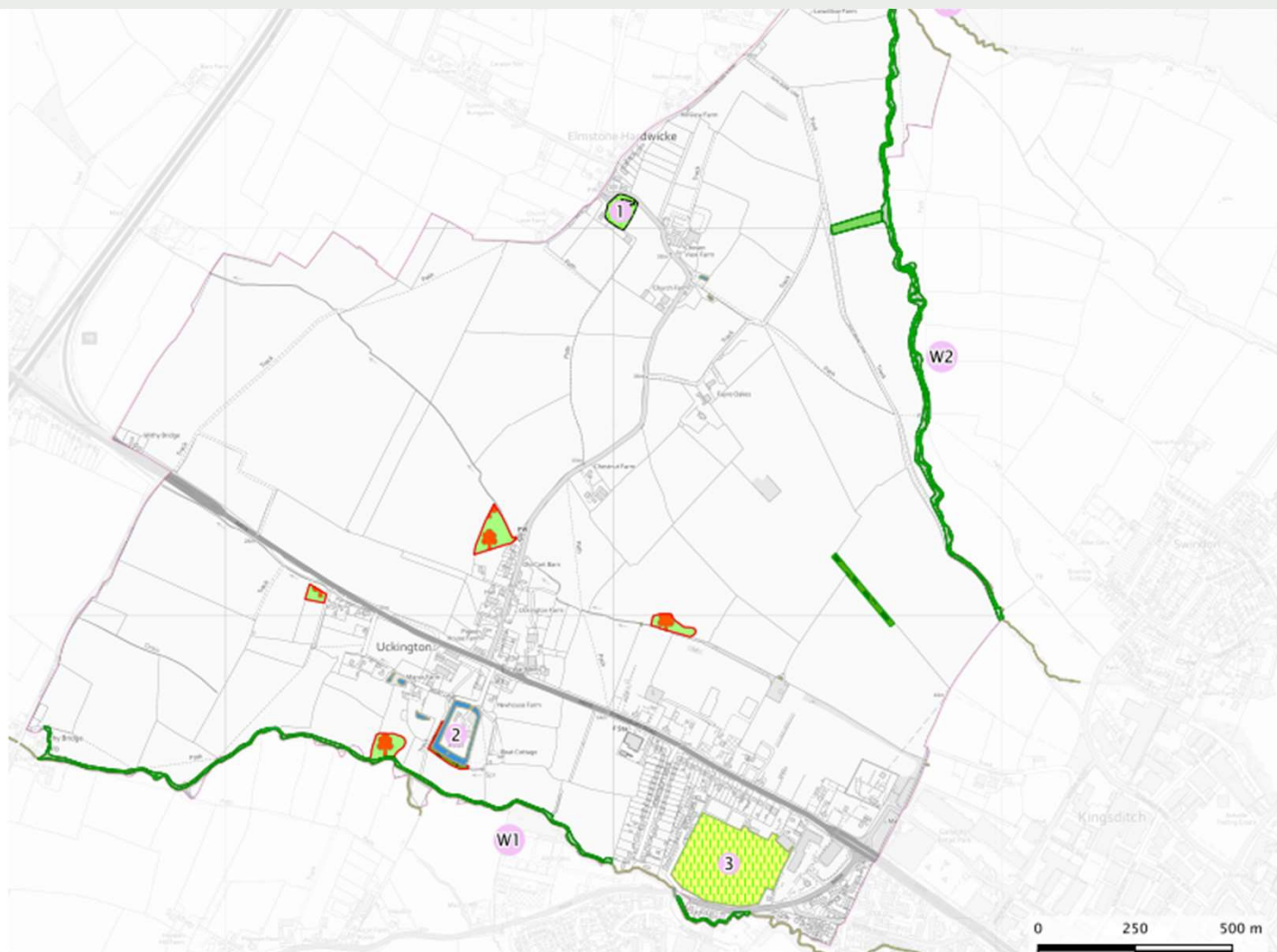
See the associated spreadsheet for a list of numbered features.

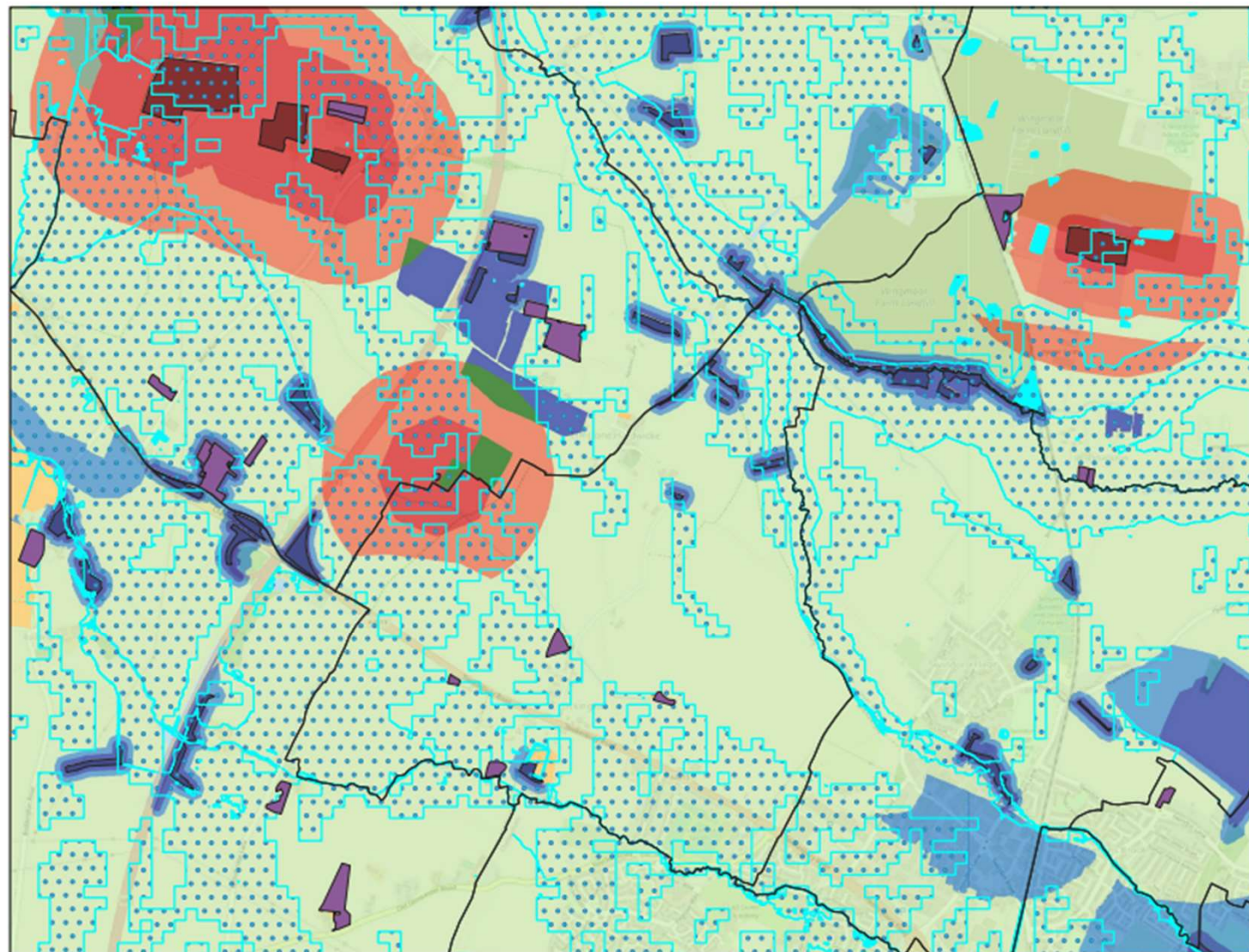
-  Woodland – semi-natural
-  Woodland – plantation
-  Amenity grassland
-  Open water
-  Scrub
-  Scattered scrub
-  Traditional orchard
-  Churchyard/cemetery
-  Parish boundary

Priority Habitats are outlined in red. Note that some of the ponds and the older hedgerows may also be in a Priority Habitat category, depending on their stage of establishment and use. These are often too small for Natural England to map on the Priority Habitat Inventory, but are known to be locally important.

Designations

No locally or nationally designated wildlife sites are present within the parish boundary; however, site 2 on the map, Moat House moated site, is a Scheduled Ancient Monument.





Gloucestershire Nature Recovery
Network: Beta version 1.2 Mar 2023
Uckington Parish

- Parish boundaries
- Open Habitats Core
- Wooded Habitats Core
- Wet Core Habitats
- Traditional orchards
- Combined open and wood network opportunities
 - Other existing priority habitats
 - Open habitat low priority
 - Open habitat medium priority
 - Wood low priority
 - Wood medium priority
 - Open habitat or Wood low priority
 - Open habitat or Wood med priority
 - Wood high priority
 - Open habitat high priority
 - Open habitat or Wood high priority
- Wetland opportunities

Please Note: This map should be considered indicative only as a guide to the areas where restoration would create greatest benefit to the network. It is generated from modelling of 'best available' data and may not always reflect the true picture on the ground. Care should always be taken to prevent degradation or further isolation of any existing valued habitat.